



Written By: Aiden Clasby

Page 1 of 5

INTRODUCTION

The battery of the Dell Inspiron 15 5577 Gaming is used to maintain charge after it has been unplugged. Over time, laptop batteries will naturally be less effective at storing charge. If the loss of effectiveness has become a problem to the point of very little or no held charge, then a replacement will be needed.



TOOLS:

- [Phillips #0 Screwdriver](#) (1)
 - [iFixit Opening Tools](#) (1)
-

Step 1 — Battery



- Unscrew the back cover using a Phillips #0 screwdriver.

Step 2



- Remove the back cover using an opening tool.

Step 3



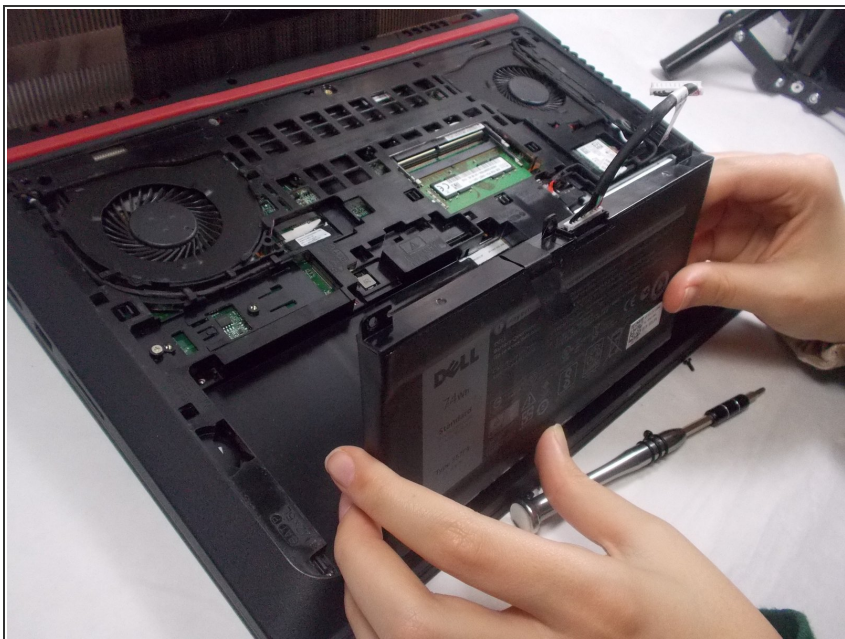
- Unscrew the battery's screws, which are located around the battery.

Step 4



- Remove the Battery Cable by gently tugging it perpendicular from the surface it is attached to.

Step 5



- Pull the battery out of the laptop by prying it away from the laptop. If you're having difficulty removing it, you can also use a plastic opening tool.

To reassemble your device, follow these instructions in reverse order.